

Cursor tools:



All views have this **window level** cursor tool. When your cursor looks like this, click and drag up, down, left, and right to adjust brightness and contrast



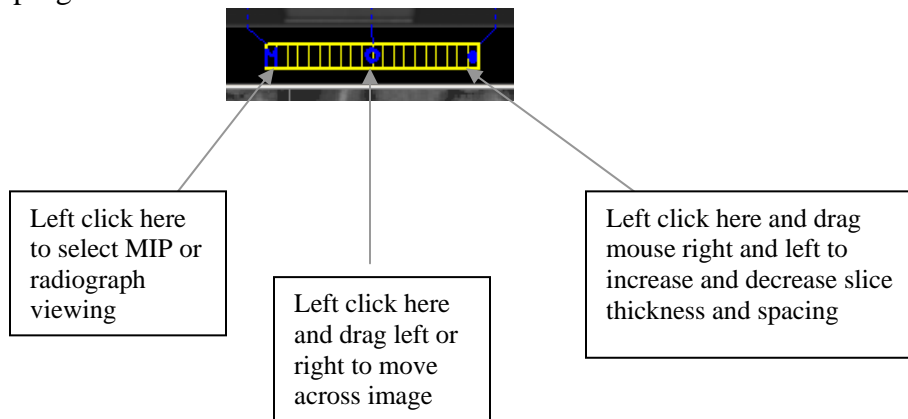
If you move the cursor to the bottom left of a cross section image, the **pan** cursor tool will appear. Click and drag to move cross sections up, down, left, and right.



If you move the cursor to the bottom right of cross section image, The **zoom** cursor tool will appear. Click and drag up and down to zoom in and out.

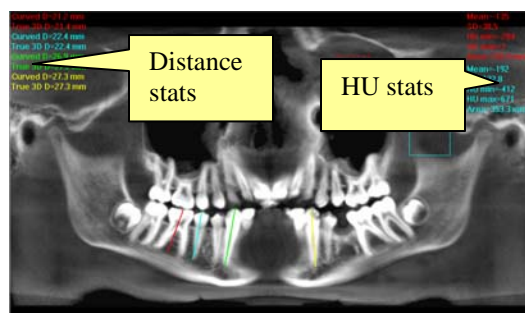
✕ **Back Tool:** to exit out of a planning screen back to the Main Display, move the cursor to the very top left corner of the screen until you see the “X” and click.

Slice Controls: The following slice control bar is found in various views and positions throughout the program:



Measurements:

- To make a hounsfield unit (density) measurement, Right click on a view and select “HU Statistics.” Click, drag, and click to define an area. Statistics will appear in upper right corner. A maximum of 4 HU stats can be taken at a time in a normal view and 2 in a cross section view.
- To make a linear measurement, right click on a view and select “Distance” Click, drag, and release to draw a line. Distance will appear in upper left corner. A maximum of 9 distance MIP measurements can be taken at a time in a normal view and 2 in a cross section view.
- Right click and select “HU Stats” or “Distance” again to turn the tool off
- Right click on measurement statistics to remove, inactivate, or activate them.



Filtering Default Recommendations:

Click *Tools / Filter Settings* and change the filter settings to:

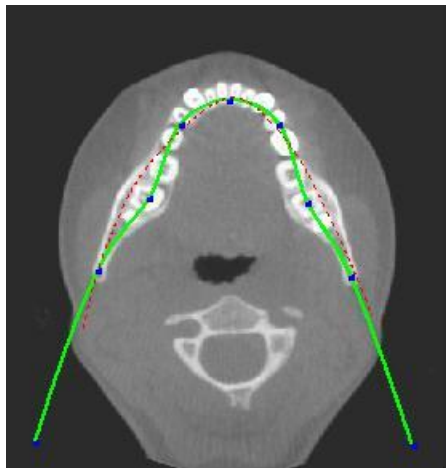
1. Preview Screen: Select “Hard” for all images.
2. Implant Screen: Select “Hard” for all images.
3. TMJ Screen: Select “Hard” for first 3 and “Normal” for Condyle Ortho Images.
4. MPR Screen: Select “Normal” for all images.
5. Ceph Screen: Select “Very Sharp” for Upper Left Right Lateral and “Hard” for all others.

Once all have been adjusted, click the *Apply* button.

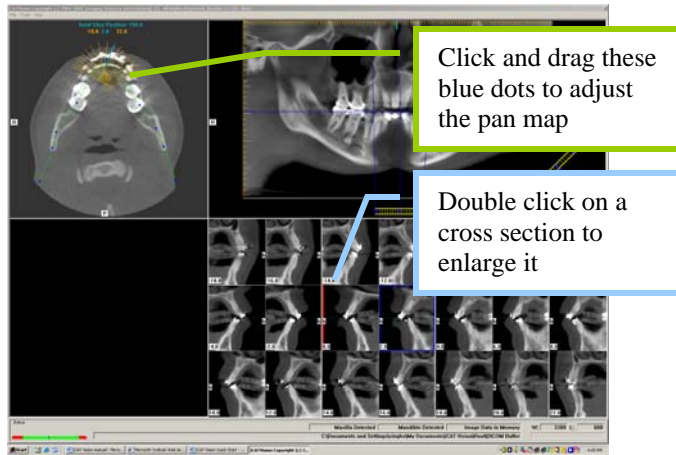
Keep in mind that these filters can be changed for each individual image on the fly by selecting *Select Filters* from the pop up menu.

Suggestions for adjusting Panoramic Map:

Start adjusting the Panoramic map from the Preview Screen. It is recommended to center the anterior point at midline and then move the next two points up closer to the anterior point on each side. Place them a few teeth away from anterior center. Then move the next two points closer to the molars. See sample below.



Implant Screen: (enter by double clicking on the Pan).

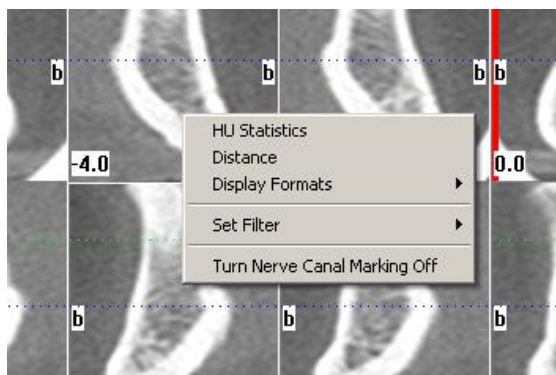


Turn orange hash marks on and off by right clicking on pan or axial view and selecting "Turn hash marks on/off" from menu

Labels: The following labels on the images help clarify the orientation of the anatomy:

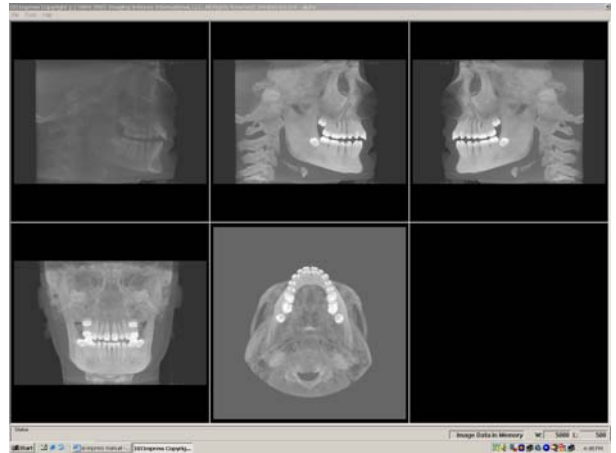
- R: Right Side
- P: Posterior
- b: buccal

Pop Up Menu: Right click on the cross section views to display the Pop Up menu with measurement and other features. Nerve Canal detection is not yet functioning.



The Ortho Screen:

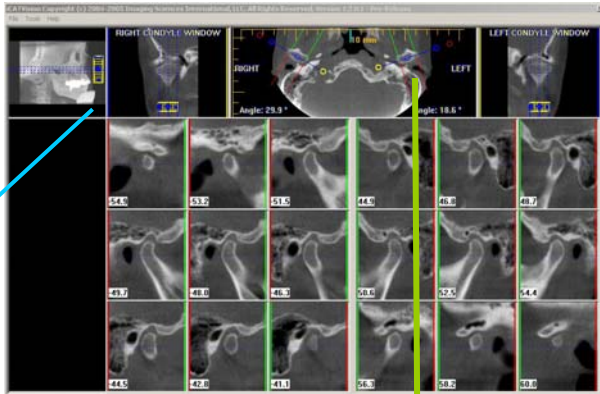
(enter by double clicking on the Sagittal view)



The Ortho screen displays the radiographic lateral cephalometric, left MIP, right MIP, frontal, and axial MIP views

The TMJ Planning Screen:

(enter by double clicking on the Axial view)

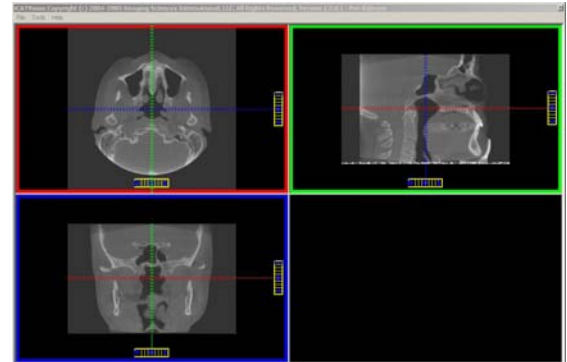


Scroll up and down sagittal to locate proper height of condyle

Click and drag blue circles to adjust condyle mapping. Click red circle to map perpendicular condyle (frontals)

The MPR Screen:

(enter by double clicking on the Coronal view)



The MPR Screen allows you to scroll through the axial, sagittal, and coronal slices

Hint: When entering the TMJ screen, you may have to first drag the axial (SMV) view down in the window to see the condyles. Move the cursor to the lower left of the SMV view until you see the “P” for pan tool. Then point, click and drag the image down.

Saving and Loading Workups:

When exiting iCAT Vision or switching patients, the program will prompt you to save your workup. To save workup, select “yes.” Select “Create new workup” to enter a new title for your workup or choose an existing workup name from list to overwrite it.

To load a workup, click on a patient name, and a “Select a workup” window will appear. Select an existing workup to load it or create a new workup.